

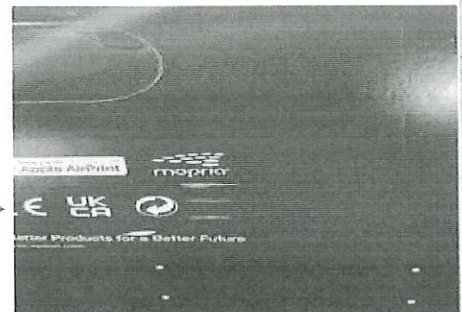
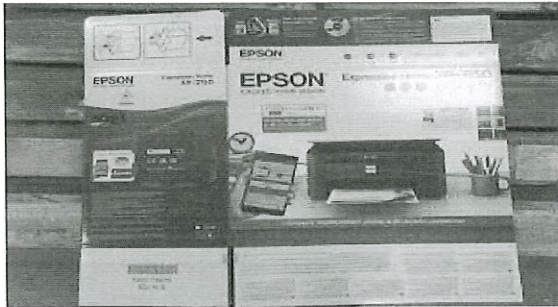
# INVESTIGATION REPORT FOR SCRATCHES OF 516213600 LIGHT MA EUROPE

## DIRECT CAUSE METHOD (PROCESS)

W1: Scratches occurred due to die plate that is slightly opened (nakakawang) in the die chase.

W2: Due to the utilization, the die plate was overused.

W3: The die plate was no longer aligned in the die chase since it was used for a long time



## PRODUCTION ACTION PLAN

> Monitoring for Condition of plate

Proposed: To change the plate that are worn out and already damaged

> Check if possible for local plate

> Reorientation to Operator

> Immediate action: put paper tape

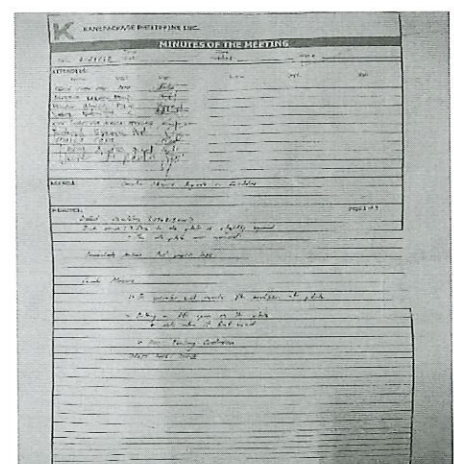
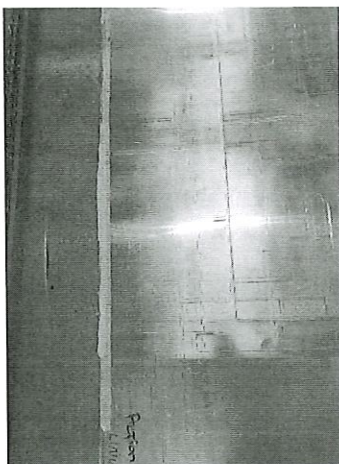
> Counter Measure:

> The operator will monitor the condition of plate.

> Putting a life span on the plate (Date when it first used)

PIC: TOOLING CUSTODIAN

TARGET DATE: DONE



Prepared by:

PRODUCTION IE

Reviewed by:

Noemi Cepeda  
PRODUCTION SUPERVISOR